

COCOON

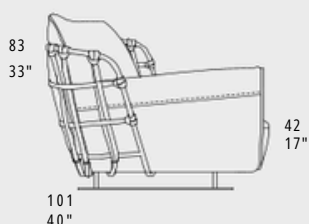
STANDARD FEATURES

- Hard wood frame, seat suspensions in reinforced elastic webbing.
- Seat depth 65 cm - 26".
- Seat height 42 cm - 17".
- Armrest width 25 cm - 10".
- Armrest height 63 cm - 25".
- Seat cushions in polyurethane with feather, covered with wadding.
- Back cushions in polyurethane covered with wadding.
- Metal legs height 13 cm - 5" and details available in all customizing finishes.
- Folding bed not available.
- All corner elements E01 and S/D81 include one C0204 throw pillow free of charge.
- Stitching CUC 501C.
- **BRAIDED VERSION:**
Metal frame available in all customizing finishes.

CARATTERISTICHE STANDARD

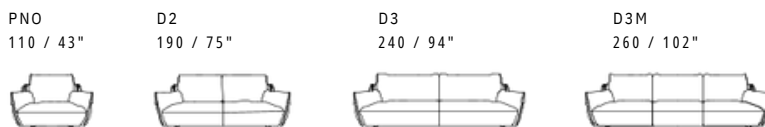
- Struttura in legno e multistrato, molleggio seduta con cinghie elastiche.
- Profondità seduta 65 cm.
- Altezza seduta 42 cm.
- Larghezza braccio 25 cm.
- Altezza braccio 63 cm.
- Cuscini seduta in poliuretano con materassina in piuma, rivestiti in falda.
- Cuscini schienale in poliuretano rivestiti in falda.
- Piedi in metallo altezza 13 cm e dettagli disponibili in tutte le finiture..
- Inserimento letto non possibile.
- Gli elementi con angolo E01 e S/D81 hanno il cuscino volante C0204 compreso nel prezzo.
- Cucitura CUC 501C.

- **VERSIONE INTRECCIATA:**
Struttura in metallo disponibile in tutte le finiture.



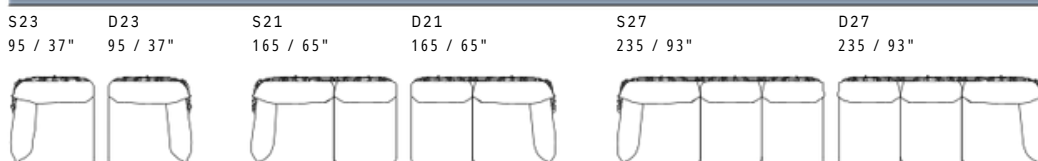
NOTES

- Dimensions: the first figure shows sizes in centimeters, the second in inches.
- Mixing above groups (X - J) will create sectionals with different seat widths.
- Corner pieces E01, S/D81, EV5 and EV6 are odd pieces and can be used with all above groups X - J.
- Suggested pillow C0204.
- Available only with Maori leather strings.
- NOTE
- Dimensioni: la prima cifra indica i centimetri, la seconda cifra indica i pollici.
- Utilizzando elementi di famiglie diverse (X - J) si avranno composizioni con sedute di larghezza diverse tra di loro.
- Gli elementi E01,S/D81, EV5 e EV6 possono essere utilizzati indifferentemente con i gruppi X - J.
- Cuscino consigliato C0204.
- Disponibile solo con cinghie in pelle Maori.

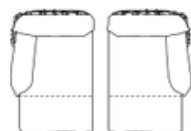


- IN THE STANDARD VERSION THE DIMENSIONS WILL BE DECREASED OF 2 CM - 1" IN DEPTH.

X all items in group X have the same seat width / tutti gli elementi del gruppo X hanno lo stesso modulo di seduta



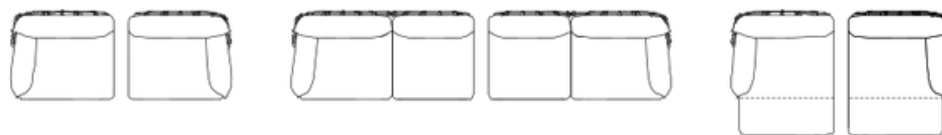
S29 95 / 37" D29 95 / 37"



DEPTH 151 / 59"

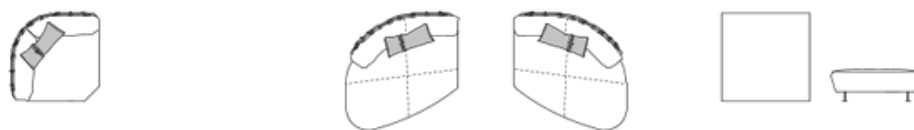
J all items in group J have the same seat width / tutti gli elementi del gruppo J hanno lo stesso modulo di seduta

S13 120 / 47" D13 120 / 47" S03 215 / 85" D03 215 / 85" S31 120 / 47" D31 120 / 47"



DEPTH 151 / 59"

E01 120X120 / 47X47" S81 155X164 / 61X65" D81 155X164 / 61X65" EV4 FREE STANDING 100X100XH.42 / 39X39XH.17"



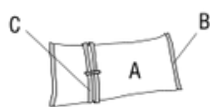
EV5 SECTIONAL CORNER ELEMENT 90X90XH.42 / 35X35XH.17"

EV6 SECTIONAL CENTRAL ELEMENT 90X90XH.42 / 35X35XH.17"

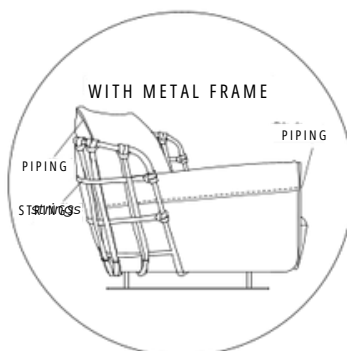
EVY BENCH 160X70XH.42 / 63X28XH.17"



C0204 SUGGESTED LUMBAR PILLOW 67X30 / 26X12"



BRAIDED



STANDARD

